

# Handheld Power Steamer

## Owner's Guide

---



**KEEP YOUR RECEIPT FOR WARRANTY PURPOSES**

Please read all instructions before use.

# IMPORTANT SAFETY INSTRUCTIONS

---



**WARNING:** To reduce the risk of fire, electrical shock, or injury, the following basic safety precautions should always be followed when using an electrical appliance.

## READ ALL INSTRUCTIONS BEFORE USE

---

1. Unit Water Tank is designed to hold a maximum of 10 oz. (296 ml.) of water. Unplug electrical cord before filling with water.
2. DO NOT leave your MC1255 Handheld Power Steamer unattended when plugged in or not in use. Use only for its intended purpose as indicated in this manual.
3. This unit is not a toy. Close supervision is required when using unit near children, pets, and plants. Steam produced by unit is hot and pressurized. Care must be taken to avoid burns or other injuries. Never point nozzle at people or pets.
4. To reduce the risk of contact with hot water emitting from steam vents, hold appliance away from body and check for signs of condensation or leakage.
5. DO NOT use this unit if electrical cord or outlet is damaged. DO NOT use unit if it is not working properly or has been dropped, damaged or left outdoors. If such damage occurs, DO NOT disassemble or attempt repairs, take unit to a qualified service person for examination and repair. Incorrect reassembly or repair could cause a risk of fire, electrical shock, or injury to persons when steam cleaner is used.
6. To reduce risk of electrical shock, DO NOT immerse in water or other liquids. DO NOT use electrical cord as a handle. DO NOT allow cord to be crimped by closing it in doors. DO NOT pull or stretch cord around sharp corners or edges.
7. Do not allow cord to touch hot surfaces. Let appliance cool completely before putting away. Loop cord loosely around appliance when storing.



**WARNING:** To reduce the risk of electrical shock, this appliance has a three-pronged plug. This plug will fit in a polarized wall outlet only one way. If the plug does not fit fully in the outlet, contact a licensed electrician to install a proper outlet. DO NOT attempt to modify the plug or defeat this safety feature.

8. DO NOT use this unit with extension cords or electrical outlets that have inadequate current capacity. A three-prong outlet or a properly grounded adapter is necessary when using MC1255 Handheld Power Steamer.
9. In order to unplug MC1255 Handheld Power Steamer, grasp plug and pull smoothly and firmly from outlet. DO NOT attempt to unplug unit by pulling or tugging on cord.
10. Use caution, as burns could occur from touching hot metal parts, hot water or steam.
11. MC1255 Handheld Power Steamer is only meant to be used with recommended MC1255 accessories. Other types of attachments are not to be used with Handheld Power Steamer. Doing so may cause injuries or damage to unit.
12. Nozzle and attachments become hot during use. To avoid injuries, DO NOT touch nozzle while using this appliance. DO NOT attempt to change attachments while unit is emitting steam.
13. When filling your Handheld Power Steamer, only water should be used in unit. Other cleaning agents will damage unit and can cause injuries.
14. DO NOT operate unit if steam opening is blocked. Should this occur, immediately cease usage and unplug from electrical outlet.
15. Store your MC1255 Handheld Power Steamer in a cool, dry place.

## SAVE THESE INSTRUCTIONS FOR HOUSEHOLD USE ONLY

---

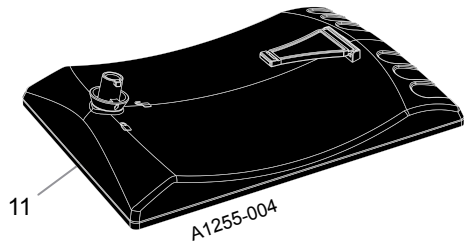
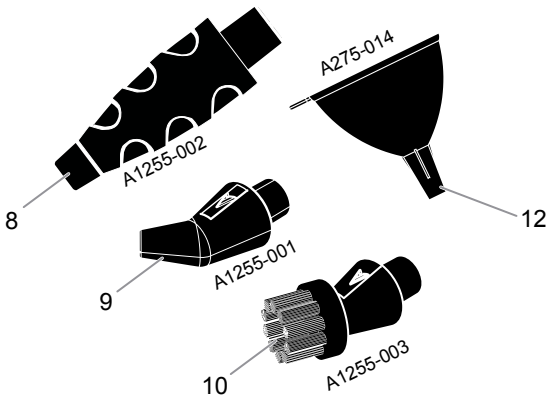
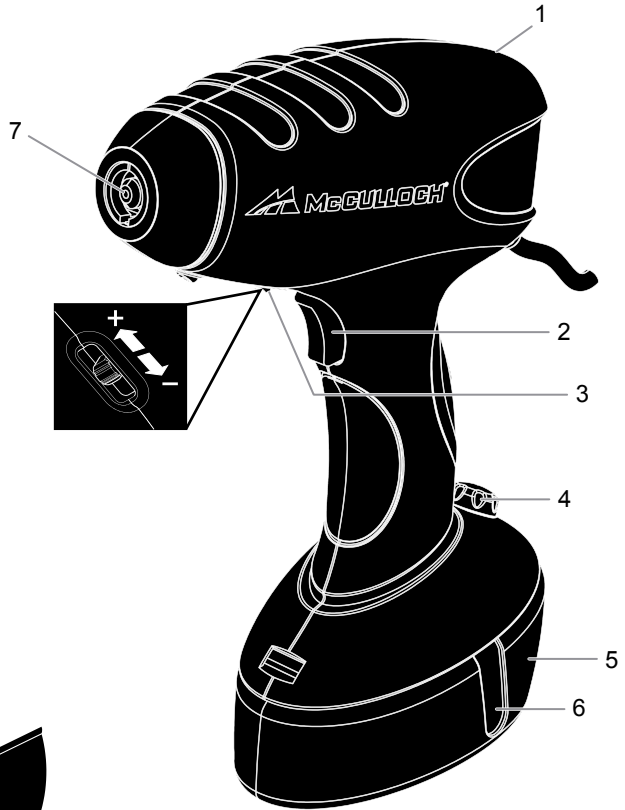
### Questions or comments?

- [www.mccullochsteam.com](http://www.mccullochsteam.com)
- [consumerservice@mccullochsteam.com](mailto:consumerservice@mccullochsteam.com)
- 1-800-711-6617

The following features and accessories are included with your Handheld Power Steamer. Carefully inspect packaging for all parts and accessories. To obtain possible missing parts, refer to the Consumer Services section on page 12 of this manual.

## UNIT FEATURES & ACCESSORIES

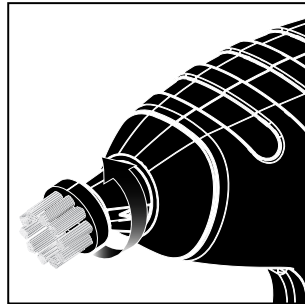
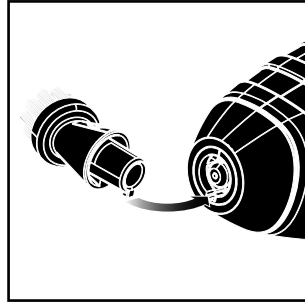
- 1 Power Light
- 2 Steam Trigger
- 3 Steam Level Switch
- 4 Fill Cap
- 5 Water Tank
- 6 Water Tank Window
- 7 Steam Outlet
- 8 3" Straight Jet Nozzle
- 9 Angled Jet Nozzle
- 10 Nylon Utility Brush
- 11 Wallpaper Remover
- 12 Funnel



- 
- The *Power Indicator Light* (1) illuminates to indicate that the unit is powered on, and that the heater is active.
  - The *Steam Trigger* (2) is pressed to activate the pump mechanism, which transfers water from the Water Tank to the boiler. Steam will be released from the Steam Outlet a few seconds after Steam Trigger is pressed. The Steam Trigger can be held down for a sustained flow of steam.
  - The *Steam Level Switch* (3) is used to adjust the intensity of the flow of steam from the Steam Outlet. Slide the Steam Level Switch up to increase steam power, and slide it down to decrease steam power.
  - The *Fill Cap* (4) must be removed in order to fill the Water Tank with water. The Fill Cap creates a tight seal to prevent spilling water.
  - The *Water Tank* (5) is the reservoir in which water is stored for use by the unit.
  - The *Water Tank Window* (6) clearly shows water level.
  - The *Steam Outlet* (7) emits a flow of hot, penetrating steam. The 3" Straight Nozzle, Angled Nozzle, Nylon Utility Brush and Wallpaper Remover all connect to the Steam Outlet. Unit should only be used when nozzles or brushes are attached.
  - The *3" Straight Jet Nozzle* (8) connects to the Steam Outlet, and is designed to focus the spray of steam for maximum cleaning power. This is ideal for tile grouting, oven racks and more.
  - The *Angled Jet Nozzle* (9) connects to the Steam Outlet and serves a similar function as the 3" Straight Jet Nozzle; however, it is designed for reaching difficult angles and areas that the 3" Straight Jet Nozzle may not completely reach.
  - The *Nylon Utility Brush* (10) connects to the Steam Outlet, and is designed to steam and scrub smaller surface areas, including metal, tile and more.
  - The *Wallpaper Remover* (11) connects to the Steam Outlet to quickly and easily remove wallpaper or even painted over wallpaper without the use of chemicals.
  - The *Funnel* (12) for easy refilling without spills.

## BEFORE YOU BEGIN:

- **DO NOT** fill the steamer with any liquids except clean water. (Distilled water recommended for longer life)
- **DO NOT** use household cleaners, bleach or any other chemicals with this steamer. Never attach accessories while unit is emitting steam.
- **DO NOT** fill the water tank while the steamer is plugged in.
- **DO NOT** operate the steamer once the water container is empty.
- **DO NOT** look directly down into the fill hole when filling. Keep your free hand and others at a safe distance.



## USING THE ACCESSORIES

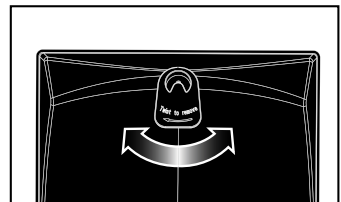
1. Make sure to align the tab on the accessory with the slot in the bottom of the steam outlet.

**NOTE: All accessories (nozzles and brushes) attach to the steam outlet in the same manner.**

2. Insert the accessory into the steam outlet. Turn the accessory 1/4 turn counter-clockwise to lock in place.

## INSTALLING WALLPAPER REMOVER

1. Place Wallpaper Remover onto the Steam Outlet.
2. Lock Wallpaper Remover by turning yellow lock tab counter clockwise into the lock position. Place support arm into recess at base of unit.
3. To remove, pull support arm out of base of unit and turn yellow lock tab clockwise to unlock. Pull Wallpaper Remover away from unit.

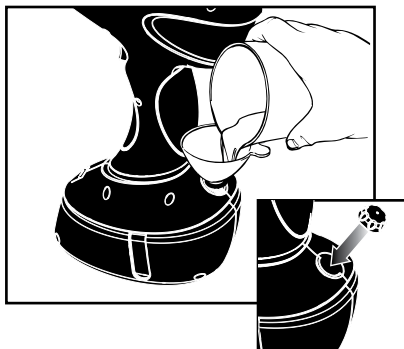
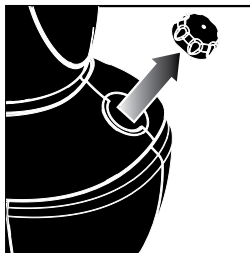


## FILLING THE WATER TANK

• Unplug power cord from electrical outlet.

1. Remove the fill cap.
2. Using the funnel, fill the water tank. Replace the fill cap when filled to desired level (10 oz.).

**NOTE:** In order to get maximum steam time, make sure the water tank is filled completely. Make sure the unit is standing upright as shown.

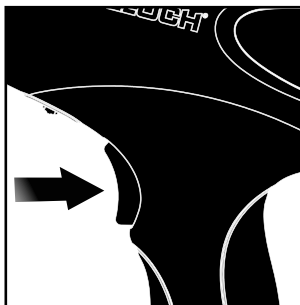


## USING THE STEAM TRIGGER

**NOTE:** After plugging in the power cord, allow the unit to heat. After approximately 30 seconds, you are ready to begin steaming.

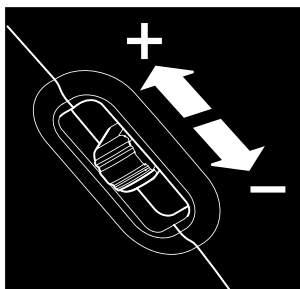
1. Hold down the Steam Trigger to bring steam to the Steam Outlet and out of the selected accessory.

**NOTE:** When pressing the Steam Trigger, it will take a few seconds for the steamer to produce steam. Likewise, the steamer will produce steam for a few seconds after releasing the Steam Trigger.



## USING THE STEAM LEVEL SWITCH

1. You can control the amount of steam emitted by using the Steam Level Switch.
  - Slide the switch toward High (+) in order to increase the flow of steam.
  - Slide the switch toward Low (-) in order to decrease the flow of steam.



## GENERAL OPERATION

**NOTE:** Be sure Steam Outlet is free of any debris and any desired accessories are connected before following these steps. If Steam Outlet shows any debris please refer to Mineral Build-Up on page 10.

1. Plug grounded power cord into a convenient electrical outlet (make sure to first remove plastic cover that protects plugs during shipping). Power Light will immediately illuminate.

**CAUTION:** This unit uses a grounded (3-prong) electrical plug. Use only in properly installed 3-prong electrical outlets. Do not attempt to alter plug or circumvent this safety feature in any way.

**NOTE:** Power Light is illuminated at all times while unit is plugged in. This unit has no On/Off power switch; it will begin heating immediately upon being plugged in.

2. Allow unit approximately 30 seconds to heat up.
3. Set Steam Level Switch to desired intensity of steam flow. Adjust between High (+) and Low (-) steam settings to control the intensity of steam for the task at hand.
4. Direct towards surface you desire to steam, and press Steam Trigger.

**NOTE:** Pressing the Steam Trigger activates the unit's pump. It will take a few seconds to actually begin producing steam. The unit will continue to produce steam for another few seconds after Steam Trigger is released.

5. To sanitize surfaces, press Steam Trigger and hold approximately 1/2 inch from surface for at least 5 seconds (this will maximize the effectiveness of the steam cleaning).

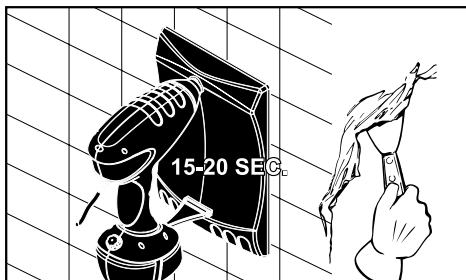
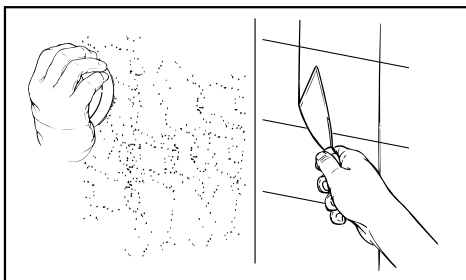
**CAUTION:** Always be sure the Handheld Power Steamer and any accessories are pointed in a safe direction (away from yourself, other people, pets, and plants) before pressing Steam Trigger.

6. Keep Steam Trigger depressed for a continuous flow of steam. Using a slight back-and-forth motion over the area you are steaming to further enhance the cleaning process.
7. Hold down the Steam Trigger as needed for sufficient steam supply. Use the Nylon Utility Brush accessory to brush away dirt, grease, unwanted dried paint, etc. **DO NOT** over-scrub the surface unless you are cleaning tiles or stone.
8. Use only clean tap water or distilled water (recommended) when using the steamer. No detergents or any other additives are needed.
9. At the end of use, immediately unplug grounded power cord from electrical outlet. Follow steps under Proper Storage procedure on page 10 of this manual.



## WALLPAPER REMOVAL

1. For best results, use a scoring tool or a putty knife and gently score the wallpaper in a criss-cross pattern before removal. The perforations will allow the steam to penetrate the wallpaper.
2. To remove wallpaper, hold the Wallpaper Remover flat against the scored wallpaper. Pull the trigger and hold for 15-20 seconds (time needed may vary). Move the steam plate to a new section and remove the steamed section with a scraper blade.



## STEAM CLEANING TIPS - READ BEFORE STARTING

When using steam on delicate materials always check the suitability of materials before steam cleaning. Steam is being generated at temperatures in excess of 212°F (100°C). **DO NOT** use on any surfaces that cannot withstand this temperature. Always test in an area that is out of view. **DO NOT** soak materials being cleaned. Too much steam can leave water marks or other damage. Only a light application of steam is required.

### Spot Treating:

- The Handheld Power Steamer may be used for treating light carpet and upholstery stains.

**Note: Some upholstery and fabrics contain stain resistant treatments which may be affected by steam cleaning. Check your upholstery manufacture for information.**

- Try cleaning a small, unseen area of carpet, to verify any unusual effects on fabric. If so do not try to clean light stains on carpet or upholstery.

### Windows and Tiles:

- Antique and stained glass may be brittle and may crack under extreme temperatures.
- Do not use on glass when the temperature is below 32°F (0°C). Glass may crack in cold temperatures.
- If your window has been treated or coated in any way, check with manufacturer before using steamer.

## PROPER STORAGE

Preparing your Handheld Power Steamer for storage is quick and simple. When you have finished your steaming tasks, follow the steps listed below.

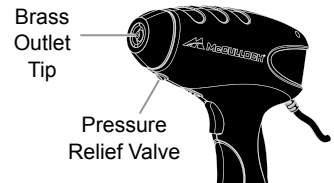
1. Unplug power cord from electrical outlet.
2. Allow unit to completely cool.
3. Remove all accessories from unit.
4. Remove Fill Cap and drain any remaining water from Water Tank into a sink or tub.
5. Store all attachments safely away, preferably near Handheld Power Steamer.
6. Store Handheld Power Steamer in a cool, dry location.

## MINERAL BUILD-UP

A common problem with steam appliances is mineral build-up caused by high mineral content in many municipal water supplies. The best way to avoid this issue is to use distilled water in unit. If you are unable to use distilled water, we recommend you use this procedure monthly to help avoid mineral build-up. Or if you notice a change in your steam output, we recommend this procedure to reduce the mineral buildup.

### To remove mineral build-up:

1. Unplug power cord from electrical outlet.
2. Allow unit to completely cool.
3. Remove all accessories from unit.
4. Insert tip of paper clip into opening of the Brass Outlet Tip to remove mineral buildup in Brass Outlet Tip. This may also be done to clean accessories such as the Nozzles.
5. Remove Fill Cap and drain any remaining water from Water Tank into sink or tub.
6. Set Steam Level Switch to maximum setting (towards +).
7. Using a measuring cup, measure 8 oz. (236 ml) of distilled vinegar.
8. Slowly pour vinegar into Water Tank and replace Fill Cap.
9. Plug power cord into an electrical outlet and allow unit to heat up.
10. Hold down Steam Trigger to spray vinegar into a sink or tub. Continue to hold down Steam Trigger until Water Tank is completely drained (approximately 8 minutes).
11. Unplug power cord from electrical outlet.
12. Fill Water Tank with fresh water and replace Fill Cap.
13. Plug power cord into an electrical outlet and allow unit to heat up.
14. Hold down Steam Trigger to spray water into a sink or tub. Continue to hold down Steam Trigger until Water Tank is completely drained (approximately 8 minutes).
15. This will flush out any remaining vinegar solution in unit. Repeat steps 11-14 until vinegar odor dissipates.



**NOTE:** If water drips from the Pressure Relief Valve or if you notice a reduction in your steam pressure, verify the Brass Outlet Tip is clear of any mineral buildup. Remove Brass Outlet Tip by turning counter clockwise. Clear any debris as mentioned in step 4 above. Replace Brass Outlet Tip by turning clockwise until finger-tight plus 1/8th turn. Over tightening will cause damage to the threads.

**IMPORTANT:** On average, it is recommended that you follow the mineral buildup removal procedure once per month (if unit is used once every week). More frequent use may require following the procedure more often in order to keep your steamer operating at full potential. Do not exceed 20 hours of use without cleaning out mineral buildup.

<b>PROBLEM</b>	<b>POSSIBLE CAUSE</b>	<b>SOLUTION</b>
Unit fails to heat up.	Unit is not plugged in.	Plug into electrical outlet.
	Household Circuit Breaker / Ground Fault Interrupter has tripped or blown a fuse.	Reset Circuit Breaker / Ground Fault Interrupter, or replace fuse. If you need assistance, contact a licensed electrician.
The unit is heated, but does not produce steam.	Water Tank is empty.	Refill Water Tank using procedures on page 7 of this manual.
	Mineral build-up in unit.	Follow Removing Mineral Build-Up procedure on page 10 of this manual.
Steam output is intermittent.	Mineral build-up in unit.	It is normal for steam pressure to drop periodically for a few seconds. If steam stays off for longer periods, follow Removing Mineral Build-Up procedure on page 10 of this manual.
Water drips from the Pressure Relief Valve.	Mineral build-up in unit.	Follow Removing Mineral Build-Up procedure on page 10 of this manual.

## CONSUMER SERVICES

For problems with your Handheld Power Steamer, please refer to the troubleshooting guide located on page 11 of this manual. Additional inquiries should be directed to our consumer support services through our website, [www.mccullochsteam.com](http://www.mccullochsteam.com).

If you do not have internet access, you may also contact our Consumer Service Department by telephone, at 1-800-711-6617.

**NOTE: In order for our Consumer Service representatives to help you as quickly and efficiently as possible, please have the following information ready before calling:**

- Purchase information (where and when you purchased this product)
- Copy of purchase receipt / proof of purchase
- Product serial number (located on electrical specification label on back of unit)
- Date code (4-digit number located on electrical specification label)

## PRODUCT SPECIFICATIONS

MODEL	MC1255
VOLTAGE	120V
POWER	1300W
WATER CAPACITY	10 oz. (296 ml)
HEATING TIME	30 sec. (approximate)
CONTINUOUS STEAM TIME	20 min. (low) / 12 min. (high) (approximate)
UNIT WEIGHT	2.8 lbs. (1.3 kg.)
UNIT DIMENSIONS	11" x 7.48" x 3.94" (280mm x 190mm x 100mm)

## 1-YEAR LIMITED WARRANTY

### What is covered

Manufactured by Vornado Air, LLC, under license from Husqvarna AB (publ). Subject to the terms and conditions of this 1-Year Limited Warranty ("Warranty") as set forth below, Vornado warrants to the original consumer or purchaser ("Buyer") that this McCulloch®-branded steam product, excluding all accessories and attachments, (the "Product") is to be free from defects in material and workmanship for a period of one (1) year from the date of purchase when used and maintained in accordance with the Owner's Guide (the "Warranty Period").

In the event Buyer notifies Vornado of a defect in the Product within the Warranty Period, Vornado will replace the Product and/or defective component parts, as applicable and necessary. Any such replacement will be made at no charge to Buyer for parts or labor, provided that Buyer shall be responsible for all shipping and transportation costs associated with returning the Product to Vornado for inspection and covered replacement.

### What is not covered

This Warranty shall not be applicable to damage or loss caused in whole or in part by:

- Repairs, modifications or alterations to the Product by anyone other than Vornado.
- Use or operation of the Product outside the permitted or intended uses described by Vornado in the Owner's Guide, or other careless operation, handling, misuse, or abuse of the Product.

- Lack of proper maintenance or timely cleaning of the Product as specified in the Owner's Guide.
- Use of the Product other than for normal household purposes.
- Normal wear and tear.
- Used consumable parts, accessories and attachments, including, but not limited to, brushes, hangers, scrub pads and mop pads.
- Use of parts and accessories other than those produced or recommended by Vornado.
- Cosmetic damage, such as scratches, nicks and dents.
- Damage caused by accident, water, flood, fire or other acts of nature or external causes.

## Warranty limitations and exclusions

- NO OTHER EXPRESS WARRANTY IS GIVEN BY VORNADO TO BUYER AND NO REPRESENTATIVE HAS THE AUTHORITY TO MAKE REPRESENTATIONS OTHER THAN THOSE PROVIDED HEREIN.
- THERE ARE NO WARRANTIES WHICH EXTEND BEYOND THE DESCRIPTION ON THE FACE HEREOF AND ALL IMPLIED WARRANTIES, SPECIFICALLY THE IMPLIED WARRANTIES OF MERCHANTABILITY AND FITNESS FOR A PARTICULAR PURPOSE, ARE HEREBY EXPRESSLY LIMITED TO THE DURATION OF THE WARRANTY PERIOD, UNLESS A SHORTER PERIOD IS PERMITTED BY LAW.
- VORNADO'S REPLACEMENT OF THE PRODUCT IS THE EXCLUSIVE REMEDY. UNDER NO CIRCUMSTANCES SHALL VORNADO BE LIABLE TO BUYER OR ANY OTHER PERSON FOR ANY INCIDENTAL, SPECIAL, CONSEQUENTIAL, OR OTHER DAMAGES, EVEN IF VORNADO HAS BEEN ADVISED OF OR COULD REASONABLY FORESEE THE POSSIBILITY OF SUCH DAMAGES, INCLUDING, BUT NOT LIMITED TO, LOSS OF PROFITS OR DAMAGE, WHETHER ARISING OUT OF BREACH OF WARRANTY, BREACH OF CONTRACT OR UNDER ANY OTHER THEORY OF LAW.
- THIS WARRANTY GIVES BUYER SPECIFIC LEGAL RIGHTS. BUYER MAY ALSO HAVE OTHER RIGHTS WHICH VARY FROM STATE-TO-STATE. SOME STATES DO NOT ALLOW THE EXCLUSION OR LIMITATION OF INCIDENTAL OR CONSEQUENTIAL DAMAGES, AND SOME STATES DO NOT ALLOW LIMITATIONS ON HOW LONG AN IMPLIED WARRANTY LASTS, SO THE ABOVE LIMITATION OR EXCLUSION MAY NOT APPLY TO BUYER.

## How do you register the Warranty

Buyer must complete an application to register this Warranty within sixty (60) days following date of purchase. Buyer may either visit Vornado's website at [www.mccullochsteam.com](http://www.mccullochsteam.com) and complete an online application or mail a completed application to Vornado. Failure to register this Warranty within sixty (60) days following date of purchase will render this Warranty null and void.

## Warranty service

For warranty service, call 1-800-711-6617 or email [consumerservice@mccullochsteam.com](mailto:consumerservice@mccullochsteam.com) to obtain a Return Authorization ("RA") form. Include the Product model number and serial number, as well as Buyer's name, address, city, state, zip code and phone number when contacting Vornado for warranty service. Buyer may be required to provide the original sales receipt for purposes of verifying date of purchase. After receiving the RA form, the Product must be shipped, postage prepaid by Buyer, to:

Vornado Air, LLC  
Attn: Warranty & Repair  
415 E. 13th Street  
Andover, KS 67002

To assure proper handling, packages must be clearly marked with the RA number. Packages not clearly marked with the RA number may be refused at the receiving dock.

Important: After receiving return authorization, carefully pack the Product to avoid damage in shipping. Damage in shipping is not covered by the Warranty and shall be the sole responsibility of Buyer. Damage or loss not covered by this Warranty or occurring outside the Warranty Period will require a fee to cover the cost of handling and shipping. All such fees and costs shall be the sole responsibility of Buyer.

Please allow at least 1-2 weeks for return of the Product after it is received by Vornado. For ease of recordkeeping, it is recommended that Buyer staple or attached the original sales receipt to this Owner's Guide and record the Product serial number (located on the Product specifications decal) here:



review this product online

[www.mccullochsteam.com/reviews](http://www.mccullochsteam.com/reviews)

Manufactured by Vornado Air LLC under license from Husqvarna AB (publ).

For more information on other McCulloch products,  
visit [www.mcculloch.com](http://www.mcculloch.com)

For questions, or comments or warranty information,  
call 1-800-711-6617 or visit [www.mccullochsteam.com](http://www.mccullochsteam.com)